



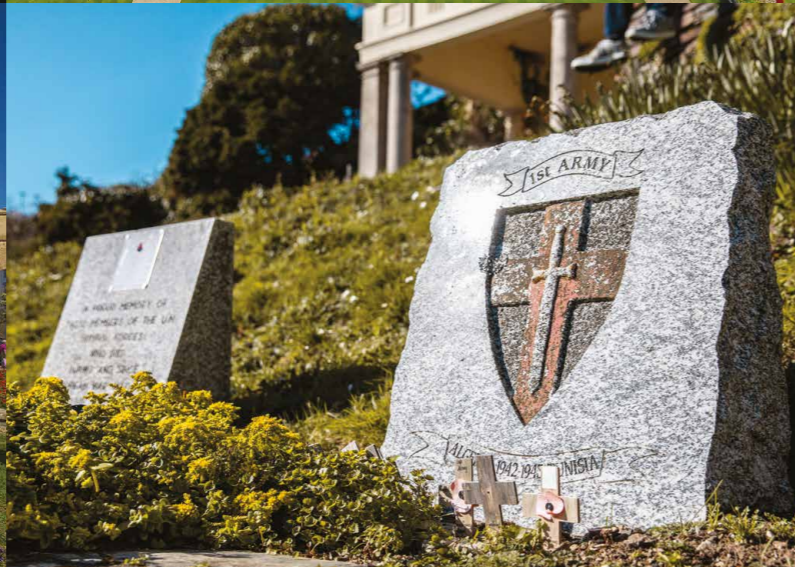
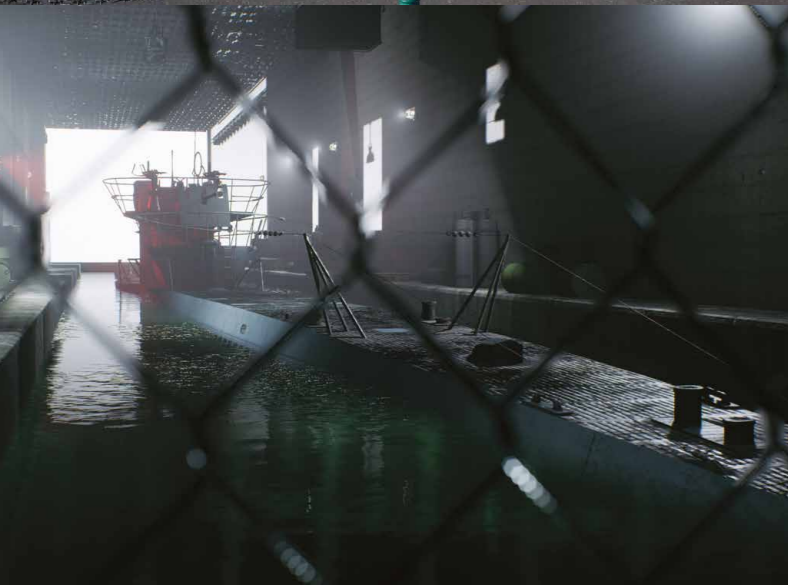
## Behind the Walls:

Fortification, Military and Medieval Strongholds through the ages



The  
Atlantic Adventures  
Collection





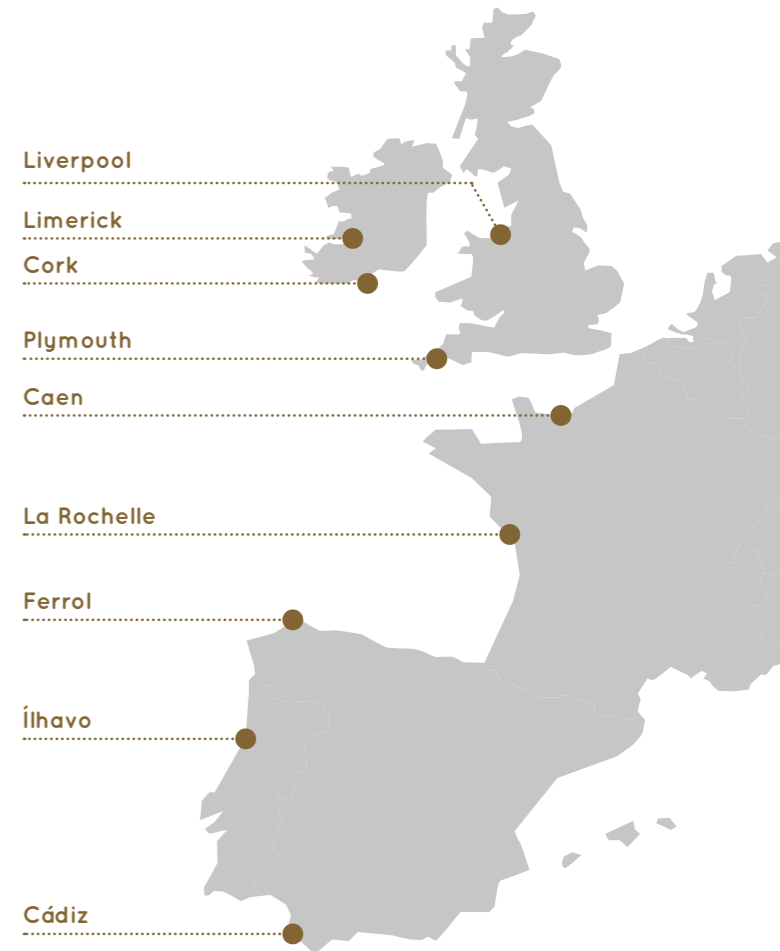
# The Atlantic Adventures Collection

Uncover key Maritime, Military and Industrial experiences across heritage destinations on the European Atlantic Coast.

The Atlantic Adventures Collection showcases a unique range of Maritime, Military and Industrial tourism experiences linking together as key heritage destinations on the Atlantic Coast. Most of these experiences have recently undergone regeneration to recover the historical memory of these Atlantic cities and to make them more engaging for future visitors.

The Atlantic Coast destinations involved cover France, Spain, Portugal, Great Britain and Ireland:

- Plymouth
- Ílhavo
- La Rochelle
- Cork
- Cádiz
- Caen
- Limerick
- Ferrol







## Plymouth

**Plymouth, Britain's Ocean City, is one of Europe's most vibrant waterfront cities, with so much to explore. There's something for every traveller to experience in this historic city, however long you have to stay.**

But there's also hundreds of years of history to uncover, from Sir Francis Drake and the Spanish Armada to the Mayflower sailing in 1620, to a city rebuilt following the Blitz during World War II.

In the Second World War Plymouth was one of the most heavily bombed cities in England. The 'Blitz' caused widespread damage; flattening large parts of the city centre, central Devonport and areas of Stonehouse. By 1943-4, before the War had ended, there was a revolutionary plan in place to create a new modern City. Plymouth City Centre was rebuilt following the war and is now one of the most striking examples of post-war architecture in the country.

Visit the Barbican and Sutton Harbour for quaint cobbled streets, a picturesque harbour and a wealth of independent shops and restaurants. History fans should stop by the Mayflower Steps to learn all about the departure of the Pilgrims on the Mayflower ship, who sailed from the UK to the US in 1620 in search of religious freedom.

A short walk from this historic heart of the city is Plymouth Hoe – to describe it as a park doesn't do it justice. The Hoe is home to the striking red-and-white striped former lighthouse, Smeaton's Tower and the art-deco, open-air swimming pool Tinside Lido.

It's also home to the Common War Graves Commission Plymouth Naval Memorial commemorating more than 23,000 naval personnel from the First and Second World Wars.

You can also find memorials for the National Armada, Koreans Veterans, Burma Star, Falklands War, Plymouth War Memorial, Royal Air Force and Allied Air Forces monument and South African War Memorial here on the Hoe providing striking reminders of Plymouth's involvement in military history.



Sir Francis Drake's Statue commemorating his global expedition

## Getting here

### Arriving by car

- Drive time from London is around 4 hours.
- Drive time from Manchester is around 4.5 hours.
- Drive time from Cardiff is around 2.5 hours.

### Arriving by train

Plymouth is easily accessible by train. Travelling from London takes around 3 hours with Great Western Railway, if you're coming from the north, the trip from Manchester can take 5 hours 15 minutes.

### Arriving by ferry

You can sail by cruise-ferry to Plymouth from France and Spain. Brittany Ferries run regular services from Roscoff in Brittany and from Santander in Northern Spain to the ferryport at Millbay – close to the city centre and waterfront.

### Arriving by air

There are 3 airports within an easy distance of Plymouth. These are Bristol, Exeter and Newquay.



## Military attractions to visit

### The Box

The Box is a major new cultural and heritage attraction. With a series of amazing permanent galleries filled with objects you'll be able to discover the city's human history, natural history, art, media, photographic and archive collections.

You won't be able to miss the striking naval figureheads, all lovingly restored. Once built to adorn the bows of naval warships, these icons of maritime history are suspended in a huge sweep in The Box's main entrance space. One of the first exhibitions at The Box will be 'Mayflower 400: Legend and Legacy' a major show that explores the myths and uncovers new meanings connected to the Mayflower's epic journey in 1620.

Travel trade tours include The Box Highlights, Tour, The Mayflower Experience and many other bespoke tours which can be tailor made for your group.

[www.plymhearts.org/thebox](http://www.plymhearts.org/thebox)



The Box

### Royal Citadel

A dramatic 17th century fortress built to defend the coastline from the Dutch, and keep watch on a recently rebellious town, the Royal Citadel is still in use by the military today and is the base of the 29 Commando of the Royal Artillery. (Due to its nature as an operational military establishment, tours may be suspended or cancelled without prior notice. There are strict regulations for entrance please ensure you read the before you go section for further details.)

**Group advance bookings only.**

<https://www.english-heritage.org.uk/visit/places/royal-citadel-plymouth/>

### Mount Batten Tower

Take a self-guided tour at one of Plymouth's oldest and historic landmarks, the Mount Batten Tower. Make sure you have your camera or smart phone with you on your visit to enjoy and capture the 360 degree views of Plymouth and the surrounding area from the top of the Tower too!

This state-of-the-art gun tower of the mid-17th Century is a three-storey circular structure built largely of limestone quarried from the surrounding headland but with some use of local granite too.

Please note that due to the age and layout of the building, levels are uneven with steep, irregular steps to the top of the Tower and wheelchair access is not possible. Sensible footwear is required.

£75 per hour for a maximum of 25 people

#### Self Guided Tour.

To book a private self-guided tour of the Mount Batten Tower please contact the Mount Batten Watersports and Activities Centre on 01752 404567 or email [enquiries@mount-batten-centre.com](mailto:enquiries@mount-batten-centre.com)

<https://www.mount-batten-centre.com/about/mount-batten-tower/>



Mount Batten Tower



Plymouth Waterfront

### Walking Tour of Heritage Plymouth

The historic Barbican and Sutton Harbour are at the heart of the city's heritage with the oldest buildings and the greatest number of historical stories.

Around the Barbican, a vibrant place of cobbled streets, narrow lanes and more than 200 listed buildings – many of them Tudor and Jacobean – you'll find a range of cosmopolitan boutique shops, galleries, pubs, cafes and restaurants.

Visit the Mayflower Steps from where the Pilgrims are believed to have left England aboard the Mayflower for a new life in America in 1620, discover Plymouth's maritime heritage with the one-mile Sutton Harbour Trail, or take advantage of the two National Cycle Routes right on the harbour's doorstep.

Plymouth's waterfront is home to many historic stories, with the likes of Sir Francis Drake, Captain Cook and Charles Darwin all setting sail from our shores.

[www.devonandcornwalltourguides.com/tour/plymouth-walking-tour/](http://www.devonandcornwalltourguides.com/tour/plymouth-walking-tour/)

### Key events in Plymouth

#### Armed Forces Day

As a proud military city Plymouth hosts an annual Armed Forces Day event to celebrate the links with its military personnel. Find out more at [www.visitplymouth.co.uk](http://www.visitplymouth.co.uk)

### Accommodation in Plymouth

#### Crowne Plaza Hotel

[www.crowneplaza.com/crowneplaza/plymouth](http://www.crowneplaza.com/crowneplaza/plymouth)

#### Jurys Inn – 247 bedrooms

[www.jurysinn.com/plymouth](http://www.jurysinn.com/plymouth)

#### Duke of Cornwall – 72 bedrooms

[www.dukeofcornwall.co.uk](http://www.dukeofcornwall.co.uk)

#### New Continental – 99 bedrooms

[www.newcontinental.co.uk](http://www.newcontinental.co.uk)

#### Moorland Garden Hotel – 42 rooms

[www.moorlandgardenhotel.co.uk](http://www.moorlandgardenhotel.co.uk)

### Food and drink in Plymouth

#### Plymouth Gin

[www.plymouthdistillery.com](http://www.plymouthdistillery.com)

#### The Boathouse Restaurant

[www.theboathousecafe.co.uk](http://www.theboathousecafe.co.uk)

#### Rockfish Plymouth

[www.therockfish.co.uk/restaurants/plymouth](http://www.therockfish.co.uk/restaurants/plymouth)

For more information on places to stay, things to see and do and events in Plymouth, please visit [www.visitplymouth.co.uk](http://www.visitplymouth.co.uk)





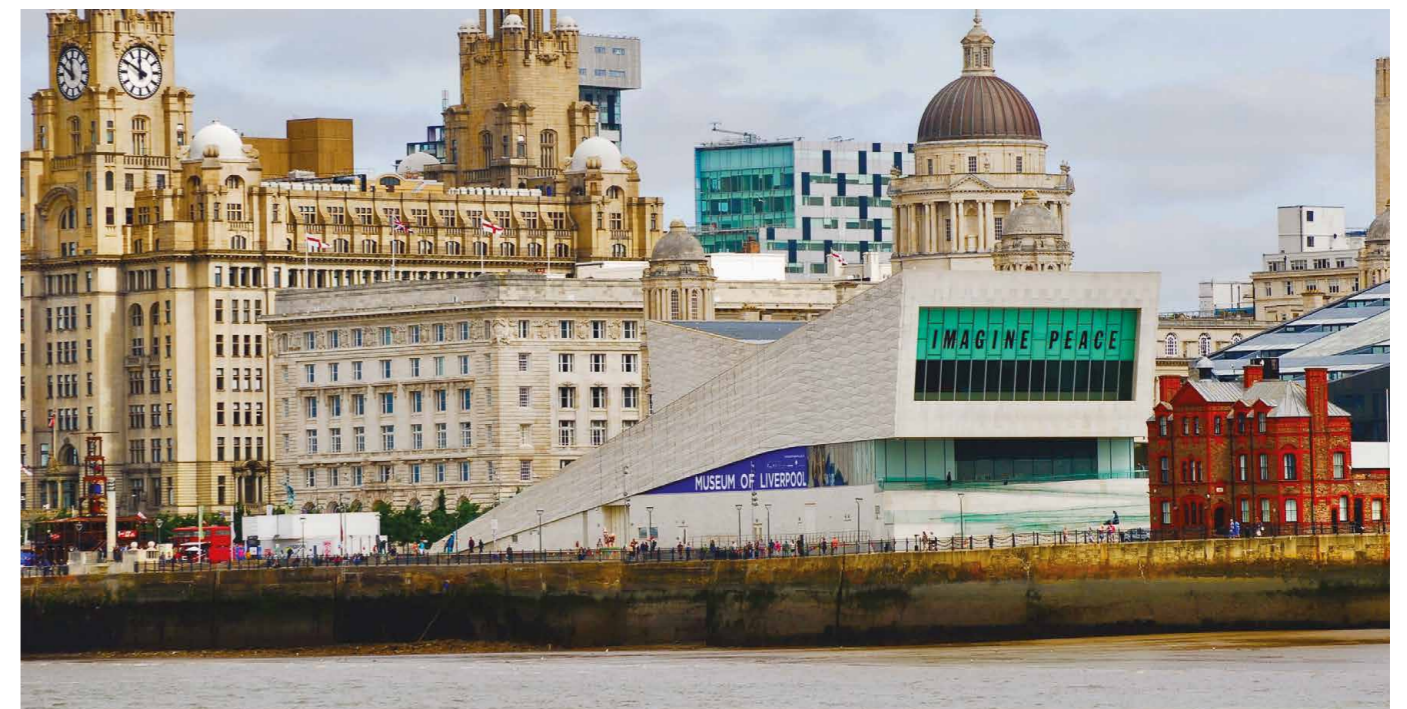
# Liverpool

**Liverpool is a city rich in military history, thanks to its strategic position on the North West coast of England the city faces out to Ireland and, further afield, to the US.**

The port city has played its part in various historical military conflicts over the last few centuries, the most notable of which being the Second World War. Liverpool was a crucial maritime port at the time making it a key target for German bombing raids. The city endured the second worst bombing in the country after London during WWII.

Deep beneath the city's streets groups have the opportunity to experience a top secret war bunker, which once played a pivotal role in the Battle of the Atlantic. The bunker was used to protect the tactics and secrets of the British Armed Forces as they fought to protect Britain's sea supply routes and aid the Allied victory.

Groups can delve deeper into Liverpool's military history with an expert-guided walking tour from one of our Blue Badge tour guides or visit one of the city's many interactive museums including the Merseyside Maritime Museum or Museum of Liverpool.



## Getting here

### Arriving by train

Merseyrail trains run frequently throughout the day across 68 stations in and around the Liverpool area. With 4 city centre underground stations – Lime Street lower level,

Liverpool Central, Moorfields and James Street – you can easily get around the city, giving you more time to see everything Liverpool has to offer.

### Arriving by ferry

Take the world-famous 'Ferry Cross the Mersey' with Mersey Ferries, owned and managed by Merseytravel. Cross over to Wirral Peninsula while enjoying the on-

board commentary before visiting the quaint Port Sunlight Village and Lady Lever Art Gallery.

### Arriving by air

Nearest airport; Liverpool John Lennon Airport nearby with regional and international flights.



## Military attractions to visit

### Merseyside Maritime Museum – Lusitania: Life, Loss, Legacy

Located on Liverpool's Royal Albert Dock the Merseyside Maritime Museum explores Liverpool's historic seafaring past. Lusitania: Life, Loss and Legacy is a major exhibition that opened back in 2015 on the 100-year anniversary of the tragic sinking of the Lusitania cruise liner. The exhibition highlights new research about the people involved with the Lusitania story as well as the role of Liverpool's cruise liners in the First World War.

[www.liverpoolmuseums.org.uk/merseyside-maritime-museum](http://www.liverpoolmuseums.org.uk/merseyside-maritime-museum)



Merseyside Maritime Museum

### Museum of Liverpool – Blitzed: Liverpool Lives

Being a large maritime port, Liverpool was a key target for German bombing raids during the Second World War. The bombing of the city reached its peak in May 1941, causing massive damage to the city centre and surrounding residential areas. Liverpool Blitzed at the Museum of Liverpool is a very personal exhibition that shares the images and stories from locals showing the devastation inflicted during those seven days.

[www.liverpoolmuseums.org.uk/whatson/museum-of-liverpool/exhibition/blitzed-liverpool-lives](http://www.liverpoolmuseums.org.uk/whatson/museum-of-liverpool/exhibition/blitzed-liverpool-lives)



Museum of Liverpool

### Mersey Ferry

The Dazzle Ferry was designed by Sir Peter Blake as part of Liverpool's First World War commemorations. The unique dazzling design takes inspiration from the patterns that were first used on vessels in World War One, which used eye catching shapes and colours to 'baffle the eye', making ships difficult to target. Groups can experience a 50-minute River Explorer Cruise on the Ferry, which is also the best way to see the city's world famous waterfront.

[www.merseyferries.co.uk/our-ferries/dazzle-ferry/](http://www.merseyferries.co.uk/our-ferries/dazzle-ferry/)



Mersey Ferry

### U-Boat Story

Step aboard one of only four known U-Boats in the world. Groups can experience a unique insight into life on board the submarine during wartime through an interactive audio visual experience explaining the mysterious story of a German U-Boat that refused to surrender.

For easy access, purchase bundle tickets for the Mersey Ferry with the U-Boat story included.

[www.merseyferries.co.uk/about/u-boat-story/](http://www.merseyferries.co.uk/about/u-boat-story/)



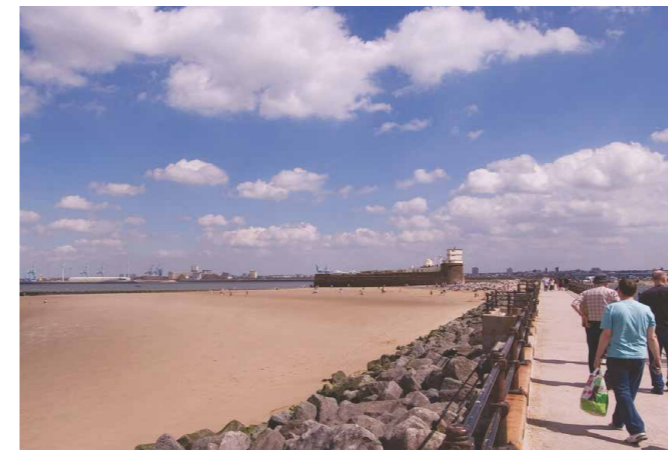
U-Boat Story

### Two places of interest

#### New Brighton – Fort perch

Sticking out the mouth of the Liverpool bay is Fort Perch Rock. An imposing sandstone coastal defence battery built in the 1820s. Built to protect the port of Liverpool from the growing concern of a potential French invasion during the Napoleonic wars.

[www.fortperchrock.org/Fort\\_Perch\\_Rock/Home.html](http://www.fortperchrock.org/Fort_Perch_Rock/Home.html)



Fort perch

#### Martin's Bank Building

A little known secret...In May 1940 when the country was threatened with German invasion, part of the UK's gold reserves were brought up from London to be safely stored in the Martin's Bank Building, as part of an operation that would evacuate British wealth to Canada named Operation Fish.



Martin's Bank Building

### Food and Drink in Liverpool

#### Philharmonic Dining Rooms

Nicknamed 'the Phil', Philharmonic Dining Rooms is a Grade I listed ornate Victorian era pub. Offering an eclectic collection of real ales paired with traditionally British pub food classics, the pub is a favourite with concert goers and visitors alike.

[www.nicholsonspubs.co.uk/restaurants/northwest/thephilharmonicdiningroomsliverpool#](http://www.nicholsonspubs.co.uk/restaurants/northwest/thephilharmonicdiningroomsliverpool#)

#### Ship & Mitre

A CAMRA pub of excellence, with an extensive selection of real ales in a bar designed to resemble the inside of a ship.

[www.theshipandmitre.com/](http://www.theshipandmitre.com/)

### Accommodation in Liverpool

#### Titanic Hotel Liverpool

[www.titanichotelliverpool.com](http://www.titanichotelliverpool.com)

#### Quest Liverpool

[www.questapartments.co.uk/properties/merseyside/liverpool/quest-liverpool-city-centre/overview](http://www.questapartments.co.uk/properties/merseyside/liverpool/quest-liverpool-city-centre/overview)

#### Pullman Liverpool – 216 bedrooms

[www.accorhotels.com](http://www.accorhotels.com)

#### Hilton Hotel Liverpool City Centre

[www.hilton.com](http://www.hilton.com)

For more information on places to stay, things to see and do and events in Liverpool, please visit [www.visitliverpool.com](http://www.visitliverpool.com)



# Cádiz

## Among the many landmarks of historical and scenic interest in Cádiz, a few stand out

The city can boast of an unusual cathedral of various architectural styles, a theatre, an old municipal building, an 18th-century watchtower, a vestige of the ancient city wall, an ancient Roman theatre, and electrical

pylons of an eye-catching modern design carrying cables across the Bay of Cádiz.

The old town is characterized by narrow streets connecting squares (plazas), bordered by the sea and by the city walls. Most of the landmark buildings are situated in the plazas.



Puerta de Tierra

## Getting here

### Arriving by train

Cádiz is easily accessible by train with direct connections to Madrid and other key tourism locations.

### Arriving by air

The Province of Cádiz currently has an airport located 7 kilometres from Jerez de la Frontera and 50 kilometres from the city of Cádiz. There is also a transport link to Africa thanks to the Algeciras heliport.

### Arriving by cruise

Seville and Malaga airports are within easy reach and offer flights to a wide range of international and national destinations.

Port of Cádiz & Cruise Terminal. (Up to 400.000 cruise passengers arriving on board of more than 400 cruise ships to Cádiz every year).

## Military attractions to visit

### Puerta de Tierra

Puerta de Tierra is a bastion-monument built around remnants of the old defensive wall at the entrance to the city of Cadiz. Built by academic architect Torcuato Cayón in the 18th century, the cover is carved in marble and was intended more as a religious altarpiece than as a military fortification.

It is one of the most significant monuments of the city and on its walls you can see flying the purple flag of its canton.

It separates, at present, the Old Town (known as "Cádiz") and the modern area (popularly known as "Puerta Tierra") in the city.

The adjustment to the new architecture of the city, opening the two new arcs, is performed by the architect Antonio Sánchez Esteve.

[www.turismo.Cadiz.es](http://www.turismo.Cadiz.es)



Puerta de Tierra

### Santa Catalina Castle

Fortress built on a rocky outcrop that reaches out to sea. La Caleta beach is on one side, protecting it to the northwest.

Spread across a vast area, the castle provides beautiful views of the sea and the city of Cadiz. The premises of the property are now used as an exhibition centre and concert hall.

Built in the 17th century, it has an Italian-style star-shaped floor-plan, and served as a military prison. It was declared of Cultural Interest in 1985.

<https://turismo.cadiz.es/es/rutas-y-visitas-en-cadiz/castillo-de-santa-catalina>



Santa Catalina Castle

### Key maritime events in Cádiz

Annual Music concerts and Festivals in the Port of Cadiz in summer time.

Please visit [www.turismo.cadiz.es](http://www.turismo.cadiz.es)

### Food and drink in Cádiz

A visit to the market is a must to breathe in the atmosphere of Cádiz and see all the wonderful fresh fish, fruit and vegetables.

Please visit [www.turismo.cadiz.es](http://www.turismo.cadiz.es)

### Accommodation in Cádiz

Please visit [www.turismo.cadiz.es](http://www.turismo.cadiz.es)

For more information on places to stay, things to see and do and events in Cádiz, please visit [www.turismo.cadiz.es](http://www.turismo.cadiz.es)



# Caen

Contrary to popular belief, the city of Caen was not completely rebuilt after the Second World War.

There is still an historic and pedestrian centre, with the characteristic Caen stone dwellings. It is pleasant to walk there among the many students and take a relaxing cup of tea on the sailing harbour.

Caen is known for its historical buildings built during the reign of William the Conqueror, who was buried there and for the Battle of Caen – heavy fighting that took place in and around Caen during the Battle of Normandy in 1944, destroying much of the city. The city has now preserved the memory by erecting a memorial and a museum dedicated to peace, the Mémorial de Caen, is a must to see.

You can also explore William's Chateau de Caen, an 11th century castle that is one of the largest medieval complexes in Europe and an impressive piece of military architecture. Surrounded by a dry moat, the Chateau de Caen is now home to the Musée de Normandie which explores the region's history from the Gauls and the Romans to the Vikings and Saxons, with exhibitions about the landscape of Normandy and the everyday lives of the Norman peasants.

Caen is a fantastic starting point to explore the sites of the Normandy Landings with guided beach tours, and the emotive Caen Memorial Museum which is dedicated to peace and is renowned as one of the best World War II museums in France.



The Memorial de Caen (Photo: Loïc Durand / Calvados Attractivité)



Granville – A fortified Town



Photo Copyright: Cherbourg Cité de la Mer

## Getting here

### Arriving by car

Main motorway routes direct to Caen. Drive time to Paris (approx. 2 hours).

### Arriving by train

Caen is easily accessible by train with direct connections to Paris and Cherbourg and other key tourism locations.

### Arriving by air

Caen-Carpiquet has its own airport with international flights, located just 6km outside of Caen. Other airports nearby in Normandy:

- Deauville
- Cherbourg-Maupertus
- Dieppe-Saint-Aubin
- Le Havre-Octeville
- Rouen-Vallée de Seine.

### Arriving by ferry

Ouistreham  
Located 10 km of Caen  
Direct routes on a daily basis to the UK.

## Military attractions to visit

### The Mémorial de Caen

Located in the immediate vicinity of the D-Day Landing beaches, the Mémorial de Caen visitor centre is among the must-see sites focusing on the Battle of Normandy and 20th century history. From the origins of World War II to the end of the Cold War, museographical displays tell of these dark pages of 20th century history.

**Group visits available.**

[www.memorial-caen.fr/](http://www.memorial-caen.fr/)

### Granville – A fortified Town (98 kms from Caen)

Le Roc is the gritty name given to Granville's dramatic headland. Walk around it not just for fantastic sea views across the Bay of the Mont Saint-Michel (although the holy mount itself remains just out of sight), but also to get an overview of this strategic port's history. English Forces built the earliest fortifications here, in the Hundred Years War.

The French took the place back, Granville going on to produce many admirals and corsairs. At the headland's western tip, hulking concrete blockhouses recall the German occupation in World War II. It is also home to Christian Dior. Christian Dior whose family participated in the industrial history of the city.

<http://www.musee-dior-granville.com/>

### Caen Castle

Caen Castle is one of the largest medieval enclosures in Europe. It was built of Caen stone around 1060. It stood first and foremost as a place of power, where the Dukes of Normandy and Kings of England regularly held their major assemblies. A royal fortress in the Middle Ages, an English stronghold during the Hundred Years' War, it was later to become the barracks of a major infantry regiment. Today this cradle of Caen's heritage is home to the Normandy Museum and the Fine Arts Museum.

The Castle has kept the traces of each of the periods of its history, like a trail of clues left by the passing of time. See also in Falaise, the castle of William the Conqueror, 25 miles and the Memorial to Wartime Civilians (Castle of William – Falaise – Grégory Wait / Calvados Attractivité) (Memorial to Wartime Civilians – Lucie Déchamps / Calvados Attractivité)

<https://www.calvados-tourisme.co.uk/offer/le-memorial-de-falaise-la-guerre-des-civils/>

66 miles from Caen, La Cité de la Mer, located within the former transatlantic liner terminal dating from the 1930's.

<https://www.citedelamer.com/en/exhibitions/cherbourg-1944/>

**For more information on Military and Medieval Heritage in Normandy please visit**  
<http://en.normandie-tourisme.fr/cultural-heritage>

### Key events in Caen

**European Heritage Open Days**  
3rd week of September

**D-Day Landings**  
6th June

Each year since 2007, D-Day Festival Normandy has been offering a programme of festive events for the anniversary of the Allied Landings of 6th June 1944.

### Accommodation in Caen

**Please visit** <https://www.caenlamer-tourisme.fr/fr/sejourner-dormir/>

### Food and drink in Caen

**Please visit** <https://www.caenlamer-tourisme.fr/fr/eveiller-ses-papilles/>

**For more information on places to stay, things to see and do and events in Caen Normandy, please visit**  
<http://www.normandie-tourisme.fr>



# Cork

**Cork, as a harbour city of strategic significance, has always been at the epicentre of military turmoil in Ireland.**

From the Battle of Kinsale in 1601 through to the War of Independence and Civil War of 1919-1922, Cork has played a major part in every troubled chapter of the nation's history.

The city and environs are dotted with buildings and monuments which exemplify this rich heritage.

Gaelic and Anglo-Norman tower houses sit side by side with star-shaped forts and martello towers and in the suburb of Ballincollig lies the now dormant Gunpowder Mills, pivotal to the campaigns of the Royal Navy during the 18th and 19th centuries in particular.

A visit to the 17th century Elizabeth Fort, situated in the heart of Cork city provides a fascinating insight into Cork's military past and from its lofty walls one can enjoy an inspiring view of the city it was built to both dominate and protect. Cork today is home to the headquarters of the Irish Naval Service, situated on Haulbowline Island in the inner harbour, itself a site of historical significance.



Blarney Castle & Gardens



Cork Public Museum

## Getting here

### Arriving by car

Cork is linked to Dublin via the M8 motorway and Rosslare Harbour via the N25 and both journeys take about 2.5 hours.

### Arriving by train

Cork's Kent Station offers easy access to the national rail network with hourly trains to Dublin (journey time 2.5 hours) and is just a 10-minute walk from the City Centre. From Kent Station you can also access local towns such as Cobh, Mallow, and Charleville.

### Arriving by air

The airport is located just 10 minutes from Cork City Centre. Bus and taxi services are available just outside the arrivals area. Cork Airport offers direct flights from almost 50 destinations around Europe including major hub airports in London, Amsterdam and Paris.

### Arriving by sea

Located just 15km from Cork City centre, the ferry terminal offers easy access to and from mainland Europe. Brittany Ferries operate daily services between Cork-Roscoff (France) and Cork-Santander in (Spain). Cork is also accessible via ferry from Rosslare and Dublin.

## Military attractions to visit

### Cork Public Museum – Military Collection

Set in the beautiful surroundings of Fitzgerald's Park, Cork Public Museum provides a fascinating insight into the heritage and archaeology of the Cork region. The museum boasts an impressive array of military artefacts including: rifles, revolvers, bayonets, swords, pistols, muskets, shotguns and ammunition.

The museum also has a large collection of military-related objects such as uniforms, medals, flags, as well as documents, photographs and personal effects of the soldiers involved in the many conflicts inside and outside of Ireland during the 19th and 20th centuries.

Families as well as groups are welcome at Cork Public Museum. However, pre-booking is necessary if you wish to have a group tour of the museum.

<https://purecork.ie/things-to-do/cork-public-museum>



Medieval Fun at Elizabeth Fort

### Blarney Castle & Gardens

Blarney Castle is a world renowned tourist attraction situated in the picturesque, leafy suburb of Blarney village, only 8km from Cork City Centre.

The castle is famous for 'kissing the blarney stone' which, according to local legend, will bestow the gift of eloquence.

The stronghold, however, is a site of considerable military significance being built in 1446 as the seat of power of Cormac Láidir (Strong), the chieftain of the McCarthy Clan and lord of the province of Munster.

**Audio Guides and Guide Books are available and groups are welcome.**

[www.blarneycastle.ie/](http://www.blarneycastle.ie/)

### Elizabeth Fort

Elizabeth Fort is situated on the south side of the city and is said to be one of the finest examples of a 17th century star-shaped fort. The fort itself has gone through a number of phases & rebuilds. Originally built in 1601 during the reign of Elizabeth I, it was replaced in 1624 by a stronger fort which had the same basic outline as that which survives today.

It is reputed that improvements were also made by Cromwell 1649 when he took control of the city. It was used again in 1690 by Williamite forces to shell the city and a cannonball fired from the fort at the old tower of St. Fin Barre's was found during the 19th century rebuilding of the Cathedral.

**Groups tours and bespoke visits are available if pre booked in advance**

[www.elizabethfort.ie](http://www.elizabethfort.ie)

### Key events in Cork

Please visit [www.purecork.ie](http://www.purecork.ie) for an up to date listings on events in Cork.

### Accommodation in Cork

Cork has a wide range of accommodation options – so whether you're looking for 5 star pampering or bustling hostels, you'll find something to suit your needs and budgets.

**To find out more visit [www.purecork.ie](http://www.purecork.ie)**

### Food and drink in Cork

Renowned as the 'Food Capital' of Ireland, Cork's food culture and its fresh local produce are reflected in a vibrant local food scene with an extensive variety of dining options. Cork offers a wide range of pubs, many of which feature live music, with new microbreweries also flourishing.

**To find out more visit [www.purecork.ie](http://www.purecork.ie)**

**For more information on places to stay, things to see and do and events in Cork, please visit [www.purecork.ie](http://www.purecork.ie)**



# Ferrol

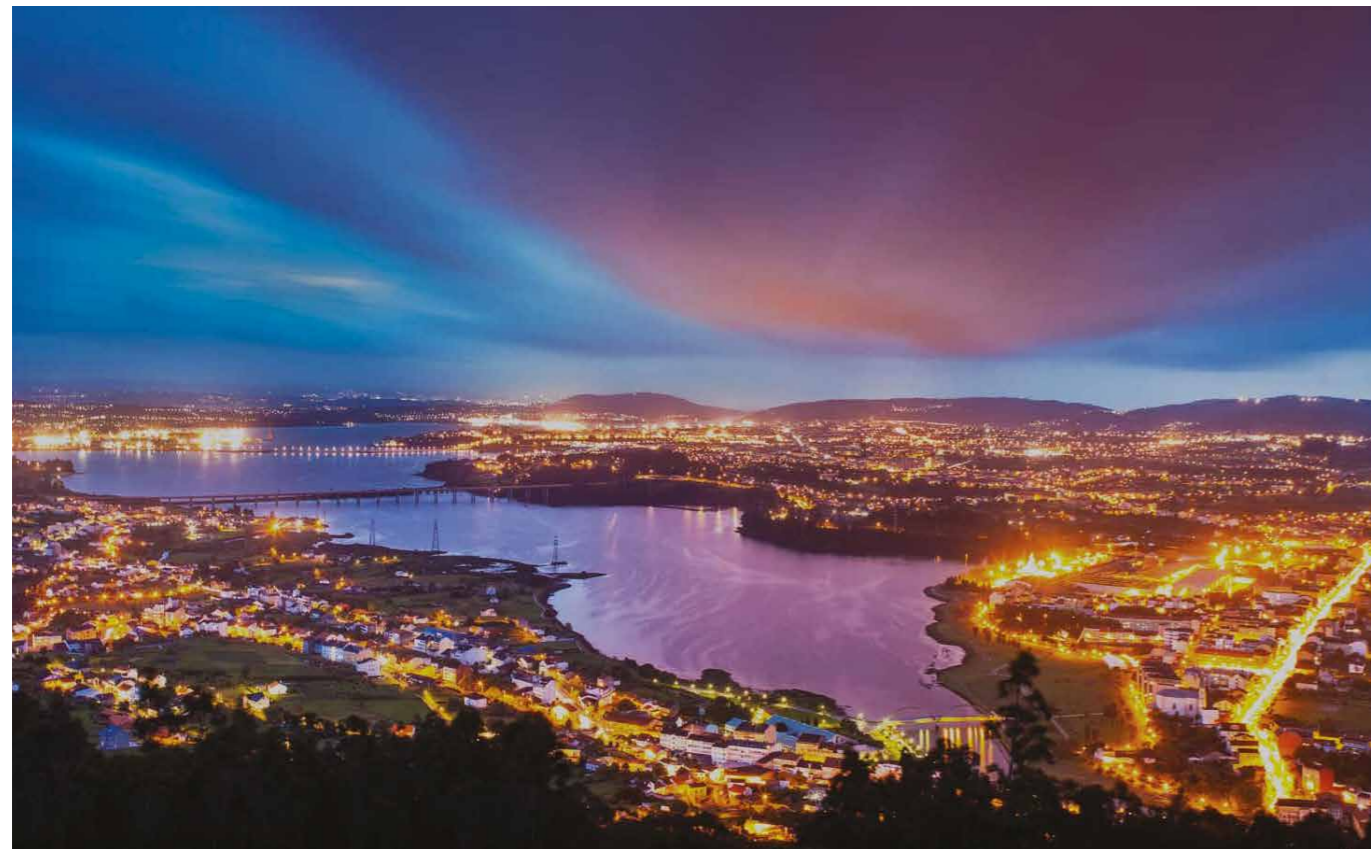
**A city hardened by a thousand battles, Ferrol is a wise mixture of culture, urban elegance and military power.**

Ferrol preserves relevant military and industry heritage sites, which are included in the indicative World Heritage List. The Military and Civil Arsenal, the natural port, the estuary flanked by the castles of La Palma and San Felipe, the civil tidal dock which is unique in Europe, and the defensive coast systems are some examples of Ferrol's heritage.

One experience visitors should not miss is a visit to the Castle of San Felipe, which transports us back to the past with a vision of the importance of the military presence in the construction and development of the city.

It is a fortress built outside the city on the coast, at the mouth of the estuary.

It offers beautiful and strategic views of the city, and a sweeping panorama of the whole estuary.



Ferrol at night

## Getting here

### Arriving by car

Drive time from Madrid is around 6 hours with accessible motorways connecting to major cities in Spain.

### Arriving by train

Ferrol is easily accessible by train with direct connections to Madrid and other key tourism locations including Barcelona.

### Arriving by air

There are 3 airports within an easy distance to Ferrol. These are La Coruna, Santiago de Compostela and Vigo.

## Military attractions to visit

### San Felipe Castle

It is the most important military construction in Ferrol. Located opposite La Palma Castle (in Mugardos) and the former castle of San Martiño, the three fortifications made the Estuary of Ferrol impregnable – a sort of “triangle of fire” that no enemy power dared to attack.

At night, the castles of San Felipe and La Palma were linked by a chain in order to prevent the passage of enemy ships. Admiral Pitt was reportedly quoted saying that if Britain had an ría like this with its castles, they would protect it with a silver wall.

In 1557 the construction of the castle began sponsored by Philip II, from which it takes its name. All in all, the building that is preserved today is from the 18th Century, when its last major renovation took place. The main works of the castle were finally finished in 1775.

San Felipe is considered to be an 18th-century example of a “bulwark-filled battery”.

This design had, on the one hand, a zone of cannon batteries directed to the sea, and on the other hand, a system of bulwarks – or protruding walls – covering the flanks of the curtains (the front walls). These bastions were used to repel attacks by land.

San Felipe is in constant process of restoration. It surprises visitors both for its constructive scheme and for the beautiful views of the estuary that can be seen from its location.

<https://visitferrol.com/castillo-de-san-felipe/?lang=en>



San Felipe Castle

### City of Enlightenment – The Dolores Barracks

The only military port of the Enlightenment still left intact in Europe, and the biggest naval base in Spain.

Declared an Asset of Cultural Interest, its building was designed by Sánchez Bort and has the honour of being the oldest barracks in Spain. It is one of the most unique works of military architecture of the 18th Century.

It has perfect symmetry and a magnificent arcade courtyard on its first two floors. It hosts the troops of Spain's marine infantry since 1771, in which its construction was completed. It is the current base of the North Third of Marine Infantry.

In its rear part, the remains of Fontelonga are preserved. It is the only one of the doors that opened in the walls that protected the city in the 18th Century.

<https://visitferrol.com/cuartel-de-dolores/?lang=en>

To access groups with a guide, contact in advance in the email [ternor\\_secretaria@fn.mde.es](mailto:ternor_secretaria@fn.mde.es)

### Key maritime events in Ferrol

#### Brion Battle

Sunday closest to August 25th

<https://visitferrol.com/batalla-de-brion/?lang=en>

For more key events in Ferrol please visit

[www.visitferrol.com](http://www.visitferrol.com)

### Accommodation in Ferrol

Please visit <https://visitferrol.com/donde-dormir/?lang=en>

### Food and drink in Ferrol

Please visit <https://visitferrol.com/donde-comer/?lang=en>

For more information on places to stay, things to see and do and events in Ferrol, please visit [www.visitferrol.com](http://www.visitferrol.com)



# Ílhavo

## Ten centuries ago, more than half of Ílhavo was under seawater...

Slowly, the sandbanks conquered the Atlantic Sea till, in 1808, the Barra was built. This new artificial water canal, between the sea and the salted lagoon known as Ria de Aveiro, allowed the growth of the maritime commerce and also insured healthier conditions for the locals.

Dating from the XVII Century (1643-1781), the Barra Fort's purpose was much more about ensuring safe navigation than for military reasons.

Also, the Lighthouse (that opened in 1983) was projected to ensure navigational safety in the area.



Ílhavo Farol Da Barra

## Getting here

### 🚗 Arriving by car

Drive time from Lisbon is around 2h30m.  
Drive time from Porto is around 1hour.

### 🚆 Arriving by train

Ílhavo is accessible by train (station in Aveiro) coming from Lisbon (2 hours) or Porto (40 minutes). From Aveiro take bus or táxi (maximum of 20 minutes to every place of Ílhavo).

### ✈️ Arriving by air

Nearest airport is Porto. Lisbon Airport is also a close option.

## Military attractions to visit

### Barra Fort

Barra de Aveiro Fort was part of a group of fortresses built between 1642 and 1648 by the king D. João IV of Portugal. Its position was aimed at reinforcing the borders of the kingdom, during the post-independence restoration period.

In the 19th century, the small fortress lost its defensive and strategic importance and was decommissioned from military use. It was still used as a landmark to guide the entry of boats into the port canal, losing only this function when the Barra Lighthouse was built.

[http://www.visitilhavo.pt/pages/3945?poi\\_id=789](http://www.visitilhavo.pt/pages/3945?poi_id=789)



Barra Fort

### Barra Lighthouse

The tallest lighthouse in Portugal looms over the Barra beach just where the Ria de Aveiro lagoon joins the Atlantic.

This red and white structure opened in 1893. It has a 23-mile beacon and rises 66 meters high above sea level. If you're up to the climb, you can scale the 288 calorie-burning steps to look out to the ocean or back through the salty lagoon canals geography.

The lighthouse is run by the Portuguese military and allows visitors on Wednesday afternoons.

<http://www.visitilhavo.pt/p/faroldabarra>



Barra Lighthouse

## Key maritime events in Ílhavo

We love festivals! Food festivals especially... We have them focusing on cod, sardines, seafood, traditional bread making, and even about cooking onboard cod-fishing ships.

You can choose local festivals between traditional carnival, puppetry arts, illustration and drawing, local dating traditions from the beginnings of the 20th century, seniority, contemporary circus in unconventional spaces, music, or many others.

**For more information on events please visit**  
[www.visitilhavo.pt](http://www.visitilhavo.pt)

## Food and drink in Ílhavo

Apart from our many food festivals, ranging from Codfish to Bread, Sardines, Seafood, and even Onboard Gastronomy, or our culinary tours, visit our extraordinary and colorful local markets! There are lots of traditional small restaurants, especially by the seaside, where you can find all about the flavors that also define us...

**For more information on food and drink please visit**  
[www.visitilhavo.pt](http://www.visitilhavo.pt)

**For more information on places to stay, things to see, where to eat or other events in Ílhavo, please visit**  
[www.visitilhavo.pt](http://www.visitilhavo.pt)



# La Rochelle

As a fortified town since the Middle Ages, La Rochelle has a rich military heritage which contributes greatly to its tourist dynamism.

Besides its towers protecting the Old Harbour which are the emblem of the town yet today, there are the remains of the different fortification systems,

its gates, reminding us of the different sieges – the most famous of which dates back to 1627 – that La Rochelle had as a protestant stronghold.

Less known, the city has a heritage linked to the Second World War, from the submarine base of La Pallice, to the batteries of Chef de Baie, which is a unique heritage site of the Atlantic Wall.



La Rochelle towers

## Getting here

### Arriving by car

Accessible motorway routes:  
 • Paris: 467 km  
 • Lyon: 650 km  
 • Marseille: 825 km

### Arriving by train

La Rochelle is easily accessible by train with direct connections to Paris and other key tourism locations – La Rochelle to Paris – 3hrs.

### Arriving by air

La Rochelle has its own airport located very close to the town with flights to and from key locations in France, Spain, Great Britain and other close European destinations.

**French version**  
<https://www.larochelle-tourisme.com>

**English version**  
<https://www.holidays-la-rochelle.co.uk>

## Military attractions to visit

### La Rochelle Towers

Come and discover these three emblematic towers of La Rochelle, which protected the port in the 14th century and controlled the entry of merchant ships, before serving as places of detention and military prison for two of them (the Saint Nicolas tower and the Chaîne tower).

The Lantern Tower was used as a lighthouse and to disarm ships upstream from the port.

<https://www.holidays-la-rochelle.co.uk>

### Virtual visit of the submarine base

The Maritime Museum offers you a virtual reality experience of the La Pallice submarine base that will give you a time travel experience from 1943 to the present day to see this unique heritage of the Atlantic Wall and its successive reuses.

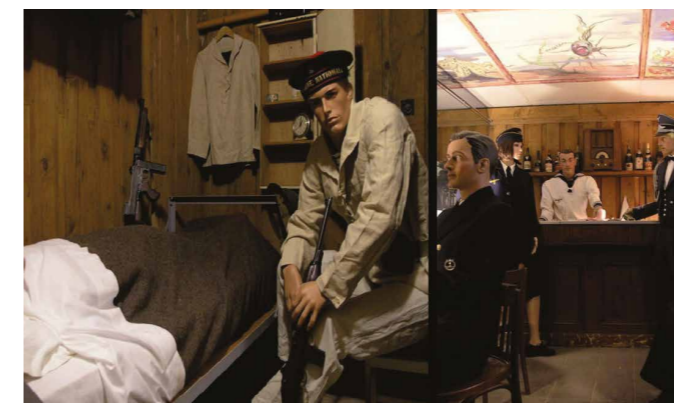
<https://www.holidays-la-rochelle.co.uk>

### La Rochelle at the time of the occupation

The Tourist Office offers you a theatrical visit allowing you to meet the people of La Rochelle during the WW2 German occupation.

The itinerary also includes a visit to the Bunker Museum, headquarters of the Admiralty and U-Boot commanders during the war, followed by a sea cruise to discover the La Pallice submarine base.

<https://www.holidays-la-rochelle.co.uk>



Musée du Bunker

### Key events in La Rochelle

#### Open Port Day June 14

For the 130th birthday of the port of La Pallice, you will be able to discover the port and its WW2 submarine base, which is a unique heritage of the Atlantic Wall.

#### European Bunker Day 30-31 May

For more information on events in La Rochelle please visit <https://www.holidays-la-rochelle.co.uk>



Submarine base inside

### Accommodation in La Rochelle

**Please visit**  
**French version**  
<https://www.larochelle-tourisme.com>  
**English version**  
<https://www.holidays-la-rochelle.co.uk>

### Food and Drink in La Rochelle

**Please visit**  
**French version**  
<https://www.larochelle-tourisme.com>  
**English version**  
<https://www.holidays-la-rochelle.co.uk>

For more information on places to stay, things to see and do and events in La Rochelle, please visit

**French version**  
<https://www.larochelle-tourisme.com>  
**English version**  
<https://www.holidays-la-rochelle.co.uk>



# Limerick

Strategically located at the point where the Shannon, Ireland's longest river meets the sea, Limerick has been a military stronghold since its foundation by the Vikings in the 10th century.

After the Anglo-Norman invasion in the late 12th century, Limerick became a fortress city, its famed walls defending many sieges and rebellions throughout the following centuries.

Located on the banks of the River Shannon, King John's Castle is one of the finest and best preserved castles in Ireland. It formed the strongpoint of Limerick's defences, which stretched for over 3 kilometres. Today a quarter of the medieval town walls remain standing: a formidable reminder of Limerick's military history.

It was from Limerick, after the siege of 1691 that Patrick Sarsfield led the celebrated Wild Geese into exile, serving in numerous armies across Europe with distinction.

The military heritage of Limerick is remembered in its motto, 'Urbs antiqua fuit studisque asperrima belli', An ancient city studied in the arts of war.

County Limerick has one of the highest concentrations of medieval castles in Ireland, with almost 400 recorded fortifications dotted throughout the verdant countryside. The principal castles of the Earls of Desmond dominate the heritage towns of Adare, Askeaton and Newcastle West. The Office of Public Works has restored these scenic riverside castles, and tours are available from the local tourism and heritage centres.



## Getting here

### Arriving by car

Drive time from Dublin to Limerick (M7) is 2 hours 20 min.  
 Drive time from Cork to Limerick (N20) is 1 hour 30 min.  
 Drive time from Galway to Limerick (M18) is 1 hour 20 min.

### Arriving by train

Limerick is easily accessible by train, with direct connections to Dublin, Cork and Galway.

### Arriving by air

Shannon International Airport is located 20km from Limerick City (30 min drive).

## Military attractions to visit

### Adare Castle and Adare Heritage Village

Adare is renowned as one of Ireland's prettiest villages, with picturesque thatched cottages nestled along the main street. The Adare Heritage Centre contains exhibitions on local history and archaeology; from here, tours of Adare Castle can be booked.

A stronghold of the Earls of Kildare, and later the Earls Desmond, Adare Castle is scenically situated on the banks of the River Maigue, its strong walls were surrounded by a moat, fed by the river. Adjacent to the castle are the ruins of a medieval Franciscan Friary, one of the three substantial monasteries in Adare. The medieval Augustinian Friary and Trinitarian Abbey were restored by the Dunraven family in the 19th century and are still in daily use. Adare Manor, former home of the Earls of Dunraven, built in the Gothic Revival style is now one of Ireland's finest hotel and golf resorts and will host the Ryder Cup in 2026.

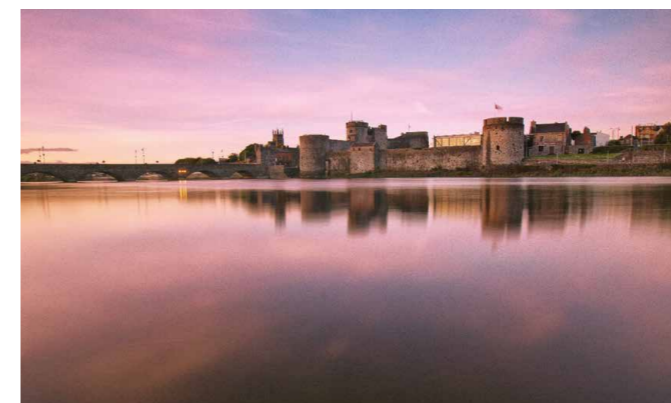
<http://www.adareheritagecentre.ie/castle-tours/>

### King John's Castle and Limerick's Medieval Quarter

The 13th century King John's Castle, on 'King's Island' is located in the heart of medieval Limerick City. Recently redeveloped, it features a stunning new exhibition centre bringing to life over 800 years of dramatic military history.

Among the castle exhibits are exciting technologies that connect you with tales of siege and warfare including state of the art interpretive activities, utilising interactive technology and 3D modelling.

<https://www.kingjohnscastle.com/>



King Johns Castle



Adare Castle

### Key events in Limerick

#### Heritage Week

15-23 August 2020

<https://www.heritageweek.ie/whats-on/events/?where=limerick>

#### Limerick Bastille Day Wild Geese Festival: King John's Castle

12 July 2020

<https://www.limerick.ie/discover/whats-on/festivals/limerick-bastille-day-wild-geese-festival>

### Accommodation in Limerick

#### Savoy Hotel: Henry Street, Limerick City

<https://www.savoylimerick.com/>

#### Adare Manor: Adare, Co. Limerick

<https://www.adaremanor.com/>

### Food and drink in Limerick

#### The Wild Geese Restaurant: Main Street Adare, Co. Limerick

<https://thewild-geese.com/>

#### The Oak Room: Adare Manor, Adare, Co. Limerick

<https://www.adaremanor.com/oak-room-michelin-star/>

For more information on places to stay, things to see and do and events in Limerick, please visit [www.limerick.ie](http://www.limerick.ie)









The Atlantic Adventures Collection in partnership with



The  
Atlantic Adventures  
Collection